

Mozart Control Panel

The Mozart Control Panel provides independent control of your Mozart Audio Card in an easy to use graphical format. To learn more about how to use the panel, click on the Graphic Tour button or a specific entry from the list below.



A Graphic Tour

[Level Controls](#)

[Balance Controls](#)

[Mute Controls](#)

[Input Source Selection](#)

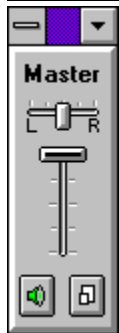
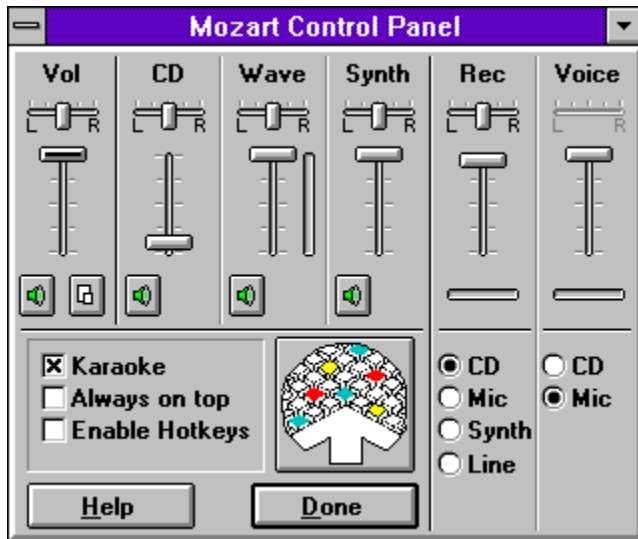
[Options](#)

[Hot Keys](#)

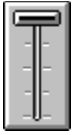
[System Menu Commands](#)

A Graphic Tour

Click the left mouse button on a control to learn more about it. The main [Contents](#) entries provide a more complete description of panel operation.



Level Controls



Controls the level (volume) for a device. If the device is stereo, both channels are changed by the same amount.

Keyboard: Use the **TAB** key to move the control focus indicator (a solid black bar in the middle of the control slide) to the control. Then press the **UP** and **DOWN** arrows to adjust to the volume to the desired level.

Mouse: Click and hold down the left mouse button on the control slide (narrow horizontal bar). Drag the mouse up to increase the volume, down to decrease the volume.

Balance Controls



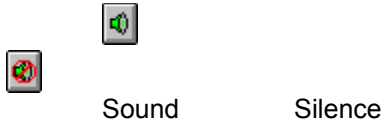
Controls the balance (left channel level versus right channel level) for a device. If the device is mono, this control is disabled.

Keyboard: Use the **TAB** key to move the control focus indicator indicator (a solid black bar in the middle of the control slide) to the control. Then press the **LEFT** and **RIGHT** arrows to adjust the balance.

Mouse: Click and hold down the left mouse button on the control slide (narrow vertical bar). Drag the mouse to the right or left to change the balance.

Tip: Double-click on the balance control slider to center the balance control.

Mute Controls



Controls the mute (silenced) state for a device. If the button has a red circle with a slash through it covering the speaker, sound from that device will not be heard in the output.

Keyboard: Use the **TAB** key to move the control focus indicator (a dotted rectangle) to the Mute control button. Then press the **SPACE** bar to toggle the control state.

Mouse: Click the left mouse button anywhere on the Mute Control to toggle the device sound on and off.

Input Source Selection



Selects the source for the **Rec** and **Voice** devices (recording). You can select one of three or four choices, depending upon the audio card and driver. Typical choices are **CD**, **Mic**, **Synth**, and **Line**. The controls act like old-fashioned radio buttons - press one and the other pops out.

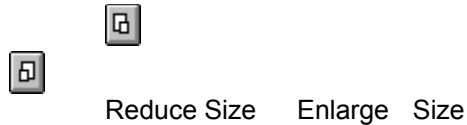
Note: The **Line** source on Mozart cards is a combination of the physical Line input connector, and the **Wave**, **Synth**, and **CD** output devices. To record **ONLY** the physical Line input, make sure that you are not playing sound on any output device.

Keyboard: Use the **TAB** key to move the control focus indicator (a dotted rectangle) to the control. Then press the **SPACE** bar to toggle the control state.

Mouse: Click the left mouse button anywhere on either control to toggle between sources.

Options

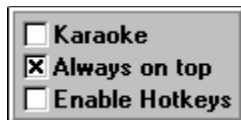
Panel Size Control



Toggles the size of the Mozart Control Panel. The full size panel displays all available devices and controls to give the user complete access to the Mozart Audio board capabilities. The small size panel displays only the Master device. Together with the Always on top option, the small version of the panel is a convenient way to manage the sound level of applications that do not provide audio controls.

Keyboard: Use the **TAB** key to move the control focus indicator (a dotted rectangle) to the control. Then press the **SPACE** bar to toggle the control state.

Mouse: Click the left mouse button anywhere on the Panel Size Control to change its state.



Karaoke Control

When this control is checked, the **Mic** input is mixed into the Mozart Audio Card output, and can be used in Karaoke applications or other programs that require a microphone monitor function.

Note: The **Rec** device Input Source Selection controls must be set to **Mic** for this feature to function.

Note: In addition to the **Rec** device level control, the **Vol** and **Wave** devices level controls affect the total microphone output volume.

Always on top

When this control is checked, the control panel is always displayed above other windows. This feature makes the panel accessible for use at all times, without having to Alt/Tab through a list of applications.

Keyboard: Use the **TAB** key to move the control focus indicator (a dotted rectangle) to the control. Then press the **UP** and **DOWN** arrows to adjust to the desired level.

Mouse: Click the left mouse button anywhere on the control to toggle the function on and off.

Hot Keys

The Mozart Control Panel provides a set of Hot Key commands for quick access to the basic functionality of the panel, even when it is minimized.

Enable

When this control is checked, the Hot Key commands are enabled.

Note: The Mozart Control Panel must already be activated, even if it is minimized, for the Hot Key commands to operate. When hot keys are enabled, there is a slight speed penalty imposed on system operation.

The Hot Key command set and the default key sequence for each is as follows:

Maximize: Alt/Ctrl-P

This command pops up the control panel display for full access.

Volume Up: Alt/Ctrl-U

This command increases the Master Level control one step each time it is pressed. When the maximum level is reached, the command has no effect. The control provides 10 steps of level control.

Volume Down: Alt/Ctrl-D

This command decreases the Master Level control one step each time it is pressed. When the minimum level is reached, the command has no effect. The control provides 10 steps of level control.

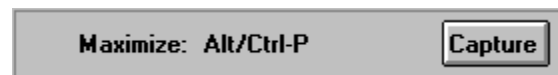
Volume Mute: Alt-Ctrl-M

This command toggles the Master Mute control on and off each time it is pressed.

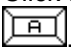
Keyboard: Press and hold the **Alt**, **Shift**, and **Ctrl** keys specified in the command key sequence. Then press the alphanumeric key shown as the last key in the sequence.

Mouse: Not applicable.

Hot Key Setup



The user can change the key sequence for each individual hot key using the following sequence:

- 1) Select **Hotkeys...** from the system menu. The Hot Key Setup dialog box is displayed.
- 2) Click the **Capture** button for the function that is to be changed. The cursor changes shape to .
- 3) Press and hold the desired modifier keys (**Alt**, **Shift**, **Ctrl**). **Alt** by itself will not work.
- 4) Press a key from **A-Z** or **0-9**. No other keys are accepted. The cursor returns to its previous shape.
- 5) Repeat steps 1-4 for each function to be changed.

Tip: Use a combination of 2 or 3 modifier keys for each function, or use the **Ctrl** key as the single modifier. No modifier or just **Shift** as modifier is allowed, but will interfere with the use of these keys in text editing.

System Menu Commands



In addition to the standard Windows system menu commands, the Mozart Control Panel provides a set of additional commands. These commands are a convenient method of accessing functions not displayed on the small version of the panel display. Every command except Hot Key Setup is duplicated on the full size control panel display.

Keyboard: Press and release the **Alt** key. Press the **UP** or **DOWN** arrow to display the menu and move the menu highlight to the desired entry. Press the **Enter** key to execute the command.

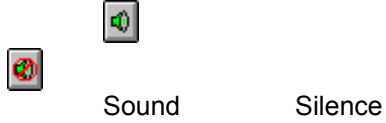
Mouse: Click and hold down the left mouse button on the System menu bar in the upper left corner of the panel title bar. Drag the mouse down to the desired entry and release the button to execute the command.

Device

A device can either play sound or record sound. Mozart devices that play sound are **CD**, **Wave**, and **Synth**. The devices that record sound are **Rec** and **Voice**. The Rec and Voice devices represent the CD, Mic, Synth, or Line source, as selected by the Source buttons. The **Vol** device controls the combined output of the **CD**, **Wave**, and **Synth** devices. The names of each device may change depending on the audio driver.

Mute Controls

Controls the mute (silenced) state for a device. If the button has a red circle with a slash through it covering the speaker, sound from that device will not be heard in the output.



Panel Size Control



Reduce Size Enlarge Size

Toggles the size of the Mozart Control Panel. The full size panel displays all available devices and controls to give the user complete access to the Mozart Audio board capabilities. The small size panel displays only the Master device. Together with the Always on top option, the small version of the panel is a convenient way to manage the sound level of applications that do not provide audio controls.

Karaoke Control

When this control is checked, the Mic input is mixed into the Mozart Audio Card output, and can be used in Karaoke applications and other programs that require a microphone monitor function.

Always on top

When this control is checked, the control panel is always displayed above other windows. This feature makes the panel accessible for use at all times, without having to Alt/Tab through a list of applications.

Level Controls

Controls the level (volume) for a device. If the device is stereo, both channels are changed by the same amount.

Balance Controls

Controls the balance (left channel level versus right channel level) for a device. If the device is mono, this control is disabled.

Input Source Selection

Selects the source for the **Rec** and **Voice** devices (recording). You can select one of three or four choices, depending upon the audio card and driver. Typical choices are **CD**, **Mic**, **Synth** and **Line**. The controls act like old-fashioned radio buttons - press one and the other pops out.

About Mozart Control Panel

Copyright (c) 1995, Oak Technology
Written by Lee Mulcahy

Done

Exit the Mozart Control Panel application. The Always on top setting, panel size, panel location, and Hotkeys information is saved in the MZTMIX.INI file.

Help

You're in it.

System Menu Commands

The following functions are available from the system menu as well as on the full size control panel:

About...

Always on top

Help...

The following function is available only from the system menu:

Hotkeys...

Enable Hotkeys

The Mozart Control Panel provides a set of Hot Key commands for quick access to the basic functionality of the panel, even when it is minimized.

When this control is checked, the Hot Key commands are enabled.

Rec

The Rec device is used in normal, or foreground recording. An example of foreground recording is the Windows *Sound Recorder* application that comes with Windows 3.1.

Voice

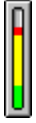
The Voice device is used in background recording applications, such as some speech recognition programs. It is a low-priority device that is automatically interrupted when a foreground recording device such as Rec is started. The Voice device automatically resumes operation when the foreground device is finished.

Input Peak Meter



During recording operations, displays the current level of the selected Rec or Voice source. For best results, the input level should be adjusted to keep the colored bar within the yellow (middle) area. Occasional spikes into the red or green areas should not affect the quality of the recording.

Output Peak Meter



Displays the current level of the **Wave** device.

